



## Installation manual and safety information

### Cover Frame



**Indian Chief**

**from model year 2021**



## Caution



### Important safety advice:

- Working on motorcycles poses a safety risk. Some work may only be carried out by appropriately qualified personnel. Faulty work can have serious consequences and may pose a threat to life and health. Only undertake installation works if you are sufficiently qualified and have an official workshop manual as well as all relevant service notifications available. Otherwise, we strongly recommend that the installation is carried out, or at least checked, in a workshop with appropriate qualified staff.
- Any work in relation to the installation, removal and tightening torque of original parts should always be carried out in compliance with the workshop manual.
- All screws must be attached with thread-locking fluid. However, this should only be done after the installation is complete.
- It is your responsibility to check the product regularly and to determine if a service or replacement is required.
- Please bear in mind that some products are safety-relevant parts of your vehicle. After a fall or collision, check the product and if there is the slightest indication of damage, you must completely replace it.
- Some products require registration.
- These products have been designed for a standard vehicle. ABM® Fahrzeugtechnik GmbH makes no warranty or guarantee of any kind for any damages whatsoever arising out of the combination with other component parts not tested by ABM, as a consequence of improper installation or inadequate maintenance.
- Brake fluid may damage painted surfaces and fairings. Use suitable means to protect all of the surfaces against damage.

## 1 Preparation

- Please read the entire safety information and installation manual carefully.
- A motorcycle not securely positioned can fall over during the following work. Therefore, make sure that the motorbike is positioned on solid, flat ground and is secured against falling over and rolling away.
- Keep children and pets away from the work area.
- Protect removed parts from damage.
- When disassembling individual parts, please note which screws are used to fasten them. Keep these parts and screws and unless specified otherwise, reuse when assembling.

2 Content



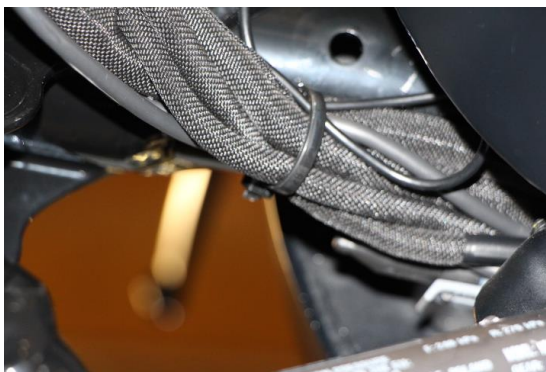
## 3 Installation:



Park the vehicle safely.



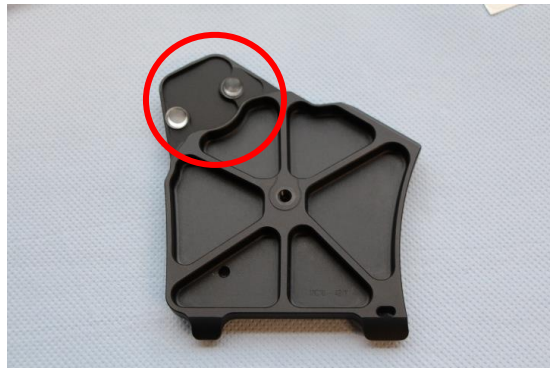
If present, remove the rubber cable guides on both sides.



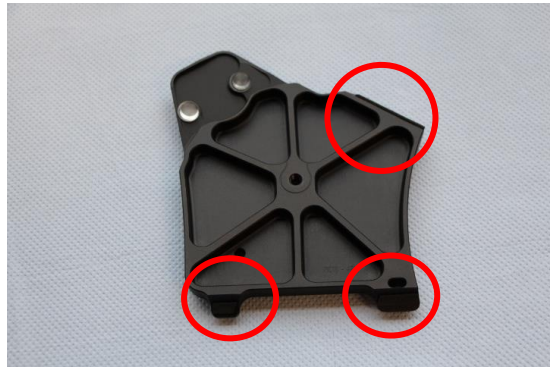
Attach the cables to the Frame using a cable tie.



Clean the frame on both sides.



Stick on the rubber buffers on both covers (see image).



Stick sponge rubber stripes onto the contact surface on both covers.



Mount the holder to the left cover using a screw and washer.  
Use thread-locking fluid (medium strength).  
In doing so, align the holder towards the engraving on the inside.



Insert the second screw and washer into the holder  
Insert an Allen key through the hole in the cover and hold the screw.



Align the right cover towards the frame triangle.



Screw both covers together...



... and secure using a cable tie.



Stick the pin into the notch and remove the protective film.

## 4 Final check

- All electric wires must be laid in a manner which prevents them from bending or getting pulled during spring deflection movements and which adequately protects them against rubbing.
- After completing the work, check that all components and screws are tight and functioning correctly. Also check the rear wheel's freewheel and the functionality of the brake system.
- A test drive must be performed afterwards. After completing the test drive, the tightness of all screw connections must be checked, as well as the adequate free travel of all moving parts. Re-test the rear wheel's freewheel and check the brake system for overheating.